

LAKE NONA TOWN CENTER I

6900 TAVISTOCK LAKES BLVD | ORLANDO, FL 32827

LAKE NONA®



Full Floor Available Move-in Ready Space

- 23,699 RSF featuring LEED Gold Certified improvements
- Private and secure (via card-key access) double-door entrance off elevator lobby
- Second generation space with Herman Miller workstations and conference room furniture available
- Combination of private offices and workstations, video conferencing and huddle rooms, hoteling desks, file storage
- Available for immediate occupancy



TAVISTOCK
DEVELOPMENT COMPANY

CLASS A
OFFICE SPACE
FOR LEASE

FOR MORE INFO, CONTACT:

GINGER VETTER
C: (407) 619-5245 | D: (407) 816-6686
gvetter@tavistock.com

LAKE NONA TOWN CENTER I - AVAILABLE SPACE



TAVISTOCK
DEVELOPMENT COMPANY

CLASS A
OFFICE SPACE
FOR LEASE

FOR MORE INFO, CONTACT:

GINGER VETTER
C: (407) 619-5245 | D: (407) 816-6686
gvetter@tavistock.com

LAKE NONA TOWN CENTER I - AVAILABLE SPACE



TAVISTOCK
DEVELOPMENT COMPANY

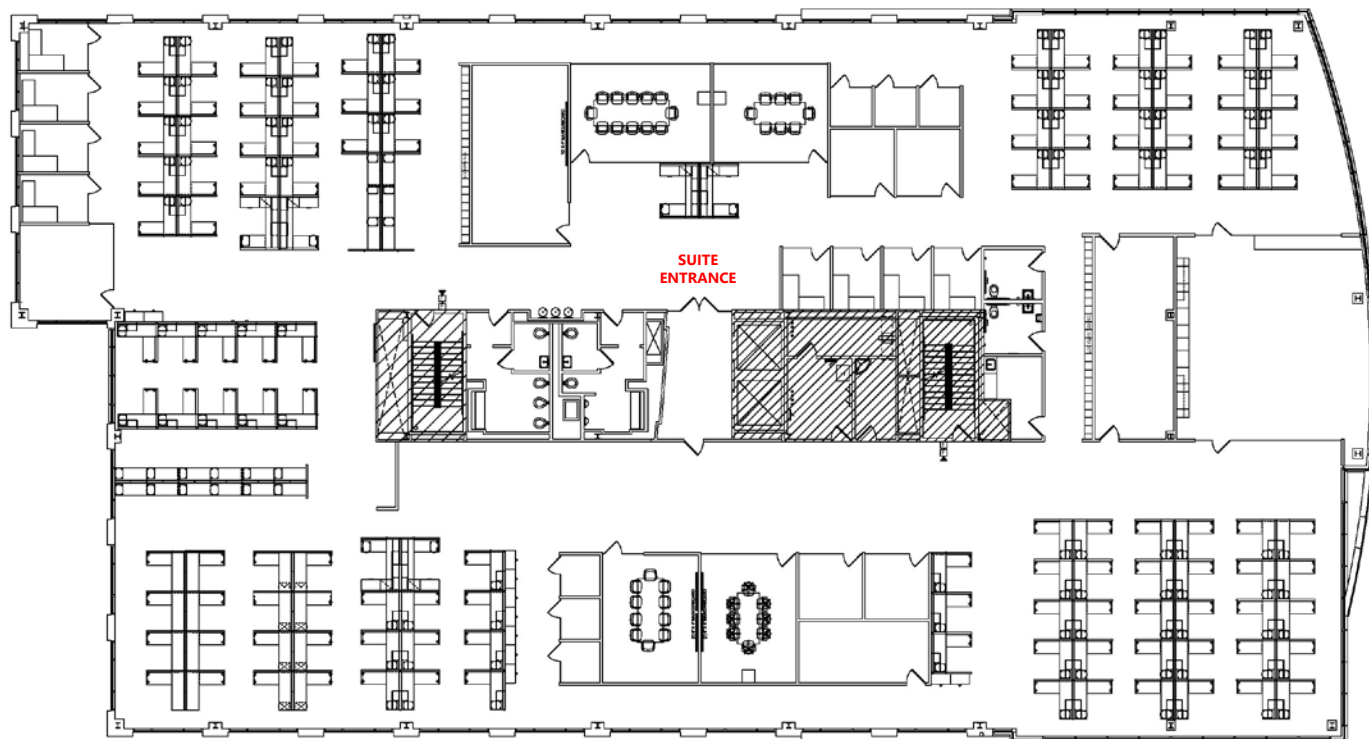
CLASS A
OFFICE SPACE
FOR LEASE

FOR MORE INFO, CONTACT:

GINGER VETTER
C: (407) 619-5245 | D: (407) 816-6686
gvetter@tavistock.com

THIRD FLOOR

23,699± RSF



FULL FLOOR AVAILABLE



TAVISTOCK
DEVELOPMENT COMPANY

CLASS A
OFFICE SPACE
FOR LEASE

FOR MORE INFO, CONTACT:

GINGER VETTER
C: (407) 619-5245 | D: (407) 816-6686
gvetter@tavistock.com



LAKE NONA TOWN CENTER I

85,000 RSF Class A Office Building

PROPERTY FEATURES

- Class-A space with upgraded finishes throughout
- Beautifully landscaped plaza with outdoor seating, restaurants and entertainment nearby
- Smoke-free community
- Parking in multi-level garage with complimentary Electronic Vehicle charging stations
- Adjacent to 204-room, Residence Inn & Courtyard by Marriott and nearby Lake Nona Wave Hotel & Conference Center
- In walking distance to state-of-the-art fitness center—Lake Nona Performance Club
- Multiple housing options nearby, some a short walk to Town Center
- Easy access to SR 417, SR 528, Florida's Turnpike and minutes from Orlando Int'l Airport



TAVISTOCK
DEVELOPMENT COMPANY

CLASS A
OFFICE SPACE
FOR LEASE

FOR MORE INFO, CONTACT:

GINGER VETTER
C: (407) 619-5245 | D: (407) 816-6686
gvetter@tavistock.com



LAKE NONA TOWN CENTER



Lake Nona Town Center is located in the heart of Lake Nona and will feature more than 6,000,000 SF of retail, dining, hotel, conference, and office space at build out.



TAVISTOCK
DEVELOPMENT COMPANY

CLASS A
OFFICE SPACE
FOR LEASE

FOR MORE INFO, CONTACT:

GINGER VETTER
C: (407) 619-5245 | D: (407) 816-6686
gvetter@tavistock.com